



# LED EXIT SIGNS RED WITH EMERGENCY LIGHTS

## EXL series

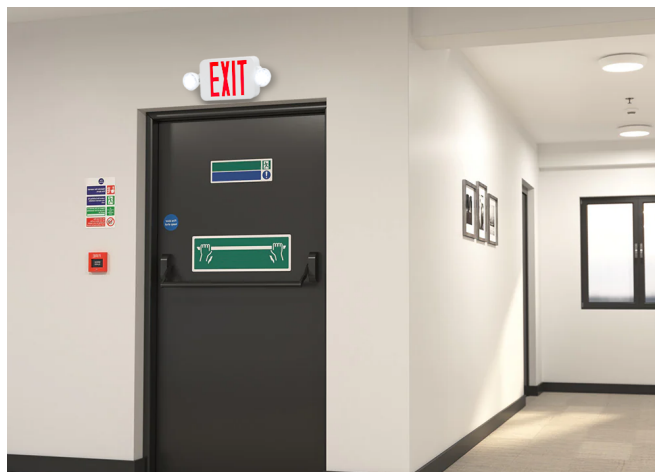
► **DESIGN** - LED EXIT SIGNS RED WITH EMERGENCY LIGHTS is designed from ABS plastic that is UL-94V-0 flame retardant, ensuring durability and resistance to fire and impact. It includes bright red "EXIT" letters, clearly visible from up to 100 feet, serving as a highly legible emergency indicator. Models also feature two rotatable emergency light heads 1.2W LED on each side. Includes field-installable directional arrows that can be easily configured for left, right, or both directions to suit various exit routing needs.

► **INSTALLATION** - This exit sign with emergency lights offers two mounting options: ceiling mount and wall mount. A universal mounting canopy and all necessary hardware are included. The design ensures quick setup with minimal effort.

► **CAPABILITIES** - Equipped with a built-in rechargeable battery, each unit provides a minimum of 90 minutes of backup illumination during power outages. The fixture supports a wide input voltage range 120–277V, ensuring flexible integration into various electrical infrastructures.

► **APPLICATION** - The design suitable for indoor environments. These exit signs are widely used in commercial and public buildings such as offices, schools, churches, hospitals, canteens, stairways, and industrial facilities. Their robust construction, high visibility, and compliance with safety regulations make them ideal for ensuring clear egress paths in emergencies.

► **ADVANTAGES** - With a lifespan of 50,000 hours, these fixtures are made to last decades under normal operation! ASD provides a 5-year limited warranty along with UL certifications to guarantee top quality products and safety!



### MOUNTING OPTIONS:



ASD-EXL-2RL-RW



ASD-EXL-2SL-RW

### PRODUCT PRESENTATION:

Model	Letters finish	Power	Battery information	Voltage	Lumens	CCT	Finish	Dimensions	Certification
ASD-EXL-2RL-RW	Red	2.2 W + 2x1.2 W	3.6V 700mAh Ni-CD	120-277V	169lm	4,000 K	White	18-1/16" x 7-3/16" x 2-13/16"	UL(E495654)
ASD-EXL-2SL-RW	Red	2.2 W + 2x1.2 W	3.6V 1000mAh Ni-MH	120-277V	149lm	4,000 K	White	20-1/4" x 7-15/16" x 3-15/16"	UL(E495654)

For most up-to-date spec sheets please refer to [asd-lighting.com](http://asd-lighting.com)





# LED EXIT SIGNS RED WITH EMERGENCY LIGHTS

EXL series

## TECHNICAL PARAMETERS:

Model	Work environment	Operating temperature	Power factor	Housing	CRI	Beam Angle
ASD-EXL-2RL-RW	Damp location	32°F to 104°F(0°C to 40°C)	>0,5	Plastic	>80	120°
ASD-EXL-2SL-RW	Damp location	32°F to 104°F(0°C to 40°C)	>0,5	Plastic	>80	120°

## INSTALLATION GUIDE

### IMPORTANT SAFETY INFORMATION:

Please read all the instructions below before installation!

- ▶ Make sure that the supply voltage corresponds to the rated product voltage.
- ▶ The product must be installed by a qualified electrician in accordance with the National Electrical Code and corresponding local codes.
- ▶ If the product is damaged, do not use it.

### ⚠ WARNING

**Risk of personal injury** – read and follow all warnings and installation instructions. Keep or give to the owner for future reference.

**Risk of cuts:** Wear gloves to prevent cuts or abrasions when removing from carton, handling, installing, and maintaining this product.

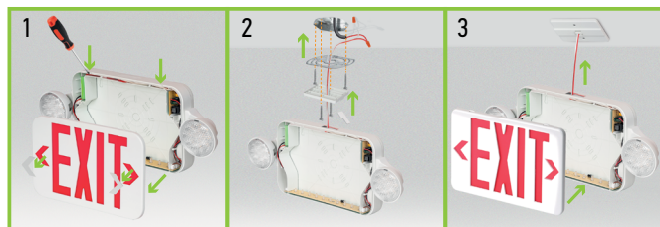
**Risk of electric shock:** This product must be installed in accordance with the applicable installation code by a person familiar with the construction and operation of the product and the hazards involved.

**Risk of Fire:** Minimum 194°F supply conductors. Consult a qualified electrician to ensure correct branch circuit conductor.

ASD® assumes no responsibility for claims arising out of improper or careless Installation or handling of this product.

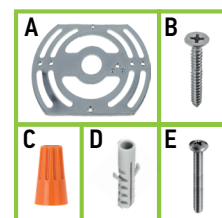
### CEILING INSTALLATION:

1. Remove the faceplate and the required arrow(s) for the exit direction. For double-sided use, release the lock tabs, replace the backplate with the second faceplate, and connect the backup battery lead to the PCB.
2. Remove the top access cap, pull supply wires through the J-box plate center hole, and attach the plate to the junction box with screws (not included). Feed fixture wires through the top hole and canopy opening. Align and snap the canopy onto the exit frame until locked. Make wire connections with wire nuts: for 120V–277V, red to red and white to white. Push connections back in to the J-box, then secure the canopy to the plate with screws.
3. Align and snap the canopy onto the exit frame until locked. Snap the faceplate onto the frame, restore power, and confirm the Test button, AC Power indicator, and exit light function. Allow 24 hours for the battery to fully charge.



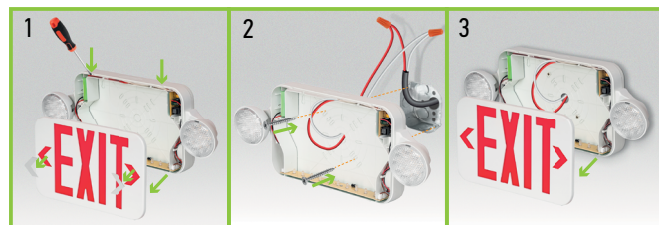
### PACKAGE CONTENTS:

Description	Quantity
LED Emergency Lights	1
Mounting plate (A)	1
Self-taping screw (B)	2
Wire nut (C)	3
Anchor (D)	2
Mounting screw (E)	2
Box	1



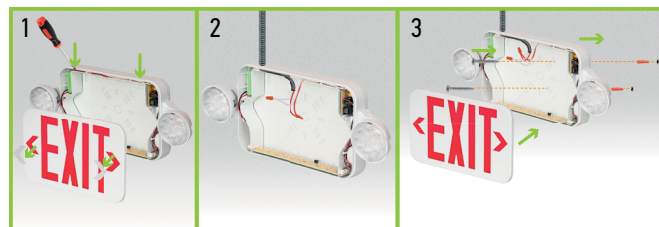
### WALL INSTALLATION:

1. Remove the faceplate with a screwdriver, detach the required arrow(s) for the exit direction, and connect the backup battery lead to the PCB securely.
2. Punch out the correct mounting pattern and wire hole on the backplate, feed the supply wires through, and connect using wire nuts: for 120V–277V, red to red and white to white. Secure the frame to the junction box with screws.
3. Snap the faceplate onto the frame, restore power, and confirm the Test button, AC Power indicator, and exit light work. Allow 24 hours for the battery to fully charge before testing emergency function.



### INSTALLATION WITH CONDUIT:

1. Remove the faceplate and the required arrow(s) for the exit direction. For double-sided use, release the lock tabs, replace the backplate with the second faceplate, and connect the backup battery lead to the PCB.
2. Route power supply wires through the conduit knockout or rear opening of the backplate. For 120V–277V, connect red to red and white to white.
3. Using the backplate as a template, mark and drill mounting holes, insert wall anchors, and fasten the backplate with screws. Snap the faceplate onto the frame, restore power, and allow 24 hours for the battery to fully charge before testing emergency function.



For most up-to-date spec sheets please refer to [asd-lighting.com](http://asd-lighting.com)



# LED EXIT SIGNS RED WITH EMERGENCY LIGHTS

## EXL series

### MAINTENANCE

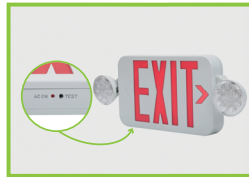
NOTE: National Electric Code (NEC) and NFPA life safety code regulations require that routine tests need to be performed.

### TESTING OPERATION:

With AC Power applied to the unit, the EXIT sign and A/C Power LED indicator should illuminate. When pushing the TEST button, the LED indicator should turn off, the EXIT sign will remain illuminated.

### TESTING THE BATTERY:

Test the unit's battery once per month. Additionally, every 12 months, a full 90-minute test should be performed. While disconnected from the main power supply, the unit should illuminate for a minimum of 90 minutes on battery back up power.



### TROUBLESHOOTING

Problem	Possible cause	Solution
The LED charge indicator does not illuminate	AC power supply is off	Ensure the unit has AC power supply. Restore the power at the breaker/fuse box
	The unit is incorrectly wired	Ensure the unit is wired correctly.
	The battery isn't connected	Ensure the battery is connected.
The LED emergency heads do not illuminate	The battery is discharged	Verify the unit is properly wired and connected to an AC power source. Allow the unit to charge for 24 hours and then re-test.
	The battery isn't connected	Ensure the battery is connected.

### BATTERY REPLACEMENT :

ASD-EXL-2RL-RW use a Ni-Cd Rechargeable AA700 mAh 3.6V battery and ASD-EXL-2SL-RW uses a Ni-MH Rechargeable AA1000mAh 3.6V battery.

To remove the battery:

1. Bend the battery catches away from the battery and remove the battery from the housing.
2. Disconnect the battery leads from the board terminal.
3. Connect the new battery to the board terminal.
4. Place the new battery in the battery location and ensure it is seated behind the battery catches.

## ORDERING INFORMATION

Model	Product dimensions	Weight	Pcs. Per carton	Carton size	Carton weight	UPC	GTIN 14
ASD-EXL-2RL-RW	18-1/16" x 7-3/16" x 2-13/16"	2.2 lbs(1.0kg)	6	18.90" x 16.65" x 8.27"	16.8 lbs	81019020109	10810190201098
ASD-EXL-2SL-RW	20-1/4" x 7-15/16" x 3-15/16"	3.2 lbs(1.4kg)	6	20.08" x 12.40" x 17.13"	22.1 lbs	81019020110	10810190201104

For most up-to-date spec sheets please refer to [asd-lighting.com](http://asd-lighting.com)

