



LED STRIPLIGHT AND STAIRWELL FIXTURE

► **DESIGN** - LED STRIPLIGHT FIXTURE has a narrow, low-profile design. Durable commercial grade housing resistant to rust and impact along with an anti-glare PMMA lens provide many years of use. It is designed to operate on 120-277V circuits with a 0-10V dimmable driver.

► **COLOR AND POWER SELECTABLE** - You can choose either a 3,500K neutral white, 4,000K cool white or 5,000K daylight color temperature, and change the power with a simple switch.

► **MOTION SENSOR** - The built-in microwave motion sensor will turn off the fixture automatically when no motion is detected. The sensor can be adjusted using the handheld remote.

► **BATTERY BACK-UP** - The built-in battery back-up provides 90 minutes of power in case of emergency.

► **LINKABLE DESIGN** - Design of the fixture allows to connect multiple fixtures together with connection bracket.

► **APPLICATION** - Perfect commercial or industrial solution for office buildings, schools, hospitals, hallways, stairwells, workshops, and many other applications. It is also Damp Locations rated.

► **ADVANTAGES** - With calculated lifespan up to 174,000 hours, these fixtures are made to last decades under normal operation! ASD provides a 5-year limited warranty along with UL and DLC Standard certifications to guarantee top quality products and safety!



PRODUCT PRESENTATION:

| Model | Type | Power | Voltage | Dimming | Lumens | CCT | Dimensions | Pre-installed | Certification | |
|--|----------------------------------|--------------|----------|---------|---------------------------|---------------------------|-------------------------------|------------------------------------|-------------------|---|
| LSF5 | | | | | | | | | | |
| ASD-LSF5-2A28AC-PRM | 2 ft | 28/24/20W | 120-277V | 0-10V | 2,646/3,325/3,890lm | 3CCT (3,500/4,000/5,000K) | 26-3/16" x 2-5/8" x 2-11/16" | - | UL (E473804), DLC | |
| ASD-LSF5-4A44AC-PRM | 4 ft | 44/36/28/22W | 120-277V | 0-10V | 3,205/3,969/5,045/5,853lm | 3CCT (3,500/4,000/5,000K) | 46-5/8" x 2-5/8" x 2-11/16" | - | UL (E473804), DLC | |
| ASD-LSF5-8A90AC-PRM | 8 ft | 90/68/48W | 120-277V | 0-10V | 6,390/9,254/12,534lm | 3CCT (3,500/4,000/5,000K) | 92-13/16" x 2-5/8" x 2-11/16" | - | UL (E473804), DLC | |
| LSF5-EM WITH BATTERY BACK-UP | | | | | | | | | | |
| ASD-LSF5-2A28AC-4EM-PRM | 2 ft | 28/24/20W | 120-277V | 0-10V | 2,646/3,325/3,890lm | 3CCT (3,500/4,000/5,000K) | 26-3/16" x 2-5/8" x 2-11/16" | 4W Battery back-up | UL (E473804), DLC | |
| ASD-LSF5-4A44AC-12EM-PRM | 4 ft | 44/36/28/22W | 120-277V | 0-10V | 3,205/3,969/5,045/5,853lm | 3CCT (3,500/4,000/5,000K) | 46-5/8" x 2-5/8" x 2-11/16" | 12W Battery back-up | UL (E473804), DLC | |
| ASD-LSF5-8A90AC-EM-PRM | 8 ft | 90/68/48W | 120-277V | 0-10V | 6,390/9,254/12,534lm | 3CCT (3,500/4,000/5,000K) | 92-13/16" x 2-5/8" x 2-11/16" | 15W Battery back-up | UL (E473804), DLC | |
| LSF5-MS STAIRWELL WITH MOTION SENSOR | | | | | | | | | | |
| ASD-LSF5-2A28AC-MS-SW | 2 ft | 28/24/20W | 120-277V | 0-10V | 2,646/3,325/3,890lm | 3CCT (3,500/4,000/5,000K) | 26-3/16" x 2-5/8" x 2-11/16" | Motion sensor | UL (E473804), DLC | |
| ASD-LSF5-4A44AC-MS-SW | 4 ft | 44/36/28/22W | 120-277V | 0-10V | 3,205/3,969/5,045/5,853lm | 3CCT (3,500/4,000/5,000K) | 46-5/8" x 2-5/8" x 2-11/16" | Motion sensor | UL (E473804), DLC | |
| ASD-LSF5-8A90AC-MS-PRM | 8 ft | 90/68/48W | 120-277V | 0-10V | 6,390/9,254/12,534lm | 3CCT (3,500/4,000/5,000K) | 92-13/16" x 2-5/8" x 2-11/16" | Motion sensor | UL (E473804), DLC | |
| LSF5-EM-MS STAIRWELL WITH MOTION SENSOR AND BATTERY BACK-UP | | | | | | | | | | |
| ASD-LSF5-4A44AC-12EM-MS-SW | 4 ft | 44/36/28/22W | 120-277V | 0-10V | 3,205/3,969/5,045/5,853lm | 3CCT (3,500/4,000/5,000K) | 46-5/8" x 2-5/8" x 2-11/16" | 12W Battery back-up, Motion sensor | UL (E473804), DLC | |
| REMOTE | | | | | | | | | | |
| ASD-RC100LCD | Remote control for motion sensor | | | | | | | 4-7/8" x 2-3/4" x 3/4" | - | - |

For most up-to-date spec sheets please refer to asd-lighting.com



LED STRIPLIGHT AND STAIRWELL FIXTURE

TECHNICAL PARAMETERS:

| Model | Max input current | Inrush current | Work environment | Operating temperature | Power factor | Surge protection | Housing | Lens | CRI |
|--|-------------------|----------------|------------------|-------------------------------|--------------|------------------|---------|------|------|
| LSF5 | | | | | | | | | |
| ASD-LSF5-2A28AC-PRM | 0.26A | 50A | Damp location | -4°F to 104°F (-20°C to 40°C) | > 0.9 | 2kV | Metal | PMMA | > 80 |
| ASD-LSF5-4A44AC-PRM | 0.41A | 50A | Damp location | -4°F to 104°F (-20°C to 40°C) | > 0.9 | 2kV | Metal | PMMA | > 80 |
| ASD-LSF5-8A90AC-PRM | 0.8A | 55A | Damp location | -4°F to 104°F (-20°C to 40°C) | > 0.9 | 2kV | Metal | PMMA | > 80 |
| LSF5-EM WITH BATTERY BACK-UP | | | | | | | | | |
| ASD-LSF5-2A28AC-4EM-PRM | 0.26A | 50A | Damp location | -4°F to 104°F (-20°C to 40°C) | > 0.9 | 2kV | Metal | PMMA | > 80 |
| ASD-LSF5-4A44AC-12EM-PRM | 0.41A | 50A | Damp location | -4°F to 104°F (-20°C to 40°C) | > 0.9 | 2kV | Metal | PMMA | > 80 |
| ASD-LSF5-8A90AC-EM-PRM | 0.8A | 55A | Damp location | -4°F to 104°F (-20°C to 40°C) | > 0.9 | 2kV | Metal | PMMA | > 80 |
| LSF5-MS STAIRWELL WITH MOTION SENSOR | | | | | | | | | |
| ASD-LSF5-2A28AC-MS-SW | 0.26A | 50A | Damp location | -4°F to 104°F (-20°C to 40°C) | > 0.9 | 2kV | Metal | PMMA | > 80 |
| ASD-LSF5-4A44AC-MS-SW | 0.41A | 50A | Damp location | -4°F to 104°F (-20°C to 40°C) | > 0.9 | 2kV | Metal | PMMA | > 80 |
| ASD-LSF5-8A90AC-MS-PRM | 0.8A | 55A | Damp location | -4°F to 104°F (-20°C to 40°C) | > 0.9 | 2kV | Metal | PMMA | > 80 |
| LSF5-EM-MS STAIRWELL WITH MOTION SENSOR AND BATTERY BACK-UP | | | | | | | | | |
| ASD-LSF5-4A44AC-12EM-MS-SW | 0.41A | 50A | Damp location | -4°F to 104°F (-20°C to 40°C) | > 0.9 | 2kV | Metal | PMMA | > 80 |

DIMMING COMPATIBLE CONTROLS:

| Brand | Leviton | Lutron | Legrand |
|--------|----------------|---------------------|------------------|
| Models | DS710 IP710 | NTSTV-DV DVTV-WH | NFTV H4FBL3PW |

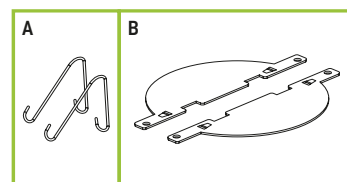
* The list of dimmers is relevant for models without a motion sensor.

MAX QUANTITY OF FIXTURES TO BE CONNECTED TOGETHER:

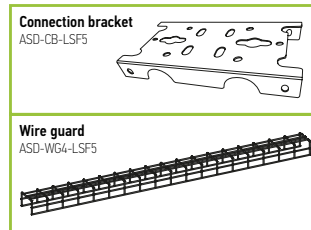
| Linkable Quantities Depending on Voltage | Model | | | | | | | | | | | |
|--|-------|------|------|------|------|------|------|------|------|------|--|--|
| | 2ft | | | 4ft | | | | 8ft | | | | |
| | 20 W | 24 W | 28 W | 22 W | 28 W | 36 W | 44 W | 48 W | 68 W | 90 W | | |
| 120V | 15 | 11 | 9 | 16 | 13 | 10 | 8 | 8 | 5 | 4 | | |
| 277V | 43 | 36 | 28 | 38 | 30 | 23 | 19 | 17 | 12 | 9 | | |

PACKAGE CONTENTS:

| Description | Quantity |
|--------------------------------------|----------|
| LED Striplight and Stairwell Fixture | 1 |
| V Hook (A) | 2 |
| J-box mounting plate (B) | 2 |
| Box | 1 |



ACCESSORIES (sold separately):



ACCESSORY COMPATIBILITY LIST:

| Model | Accessories | Connection bracket ASD-CB-LSF5 | Wire guard ASD-WG4-LSF5 |
|----------|-------------|--------------------------------|-------------------------|
| | | | |
| ASD-LSF5 | | • | • |

BUILT-IN BATTERY BACK-UP INFORMATION

- ▶ Standard CSA C22.2 NO.141, UL924
- ▶ Battery Back-up Lithium Battery
- ▶ Battery Protection: over-charge, over-discharge and short circuit protection
- ▶ The wall switch only controls the main power, it does not affect emergency function.
- ▶ Indicator light modes: Red light ON – the emergency driver is charging in standby mode; Red light OFF – AC power is out, the emergency driver works in emergency mode.
- ▶ Press Test button and release to cut the power to the AC driver and switch the system to emergency mode. The Red light will turn off, and the fixture will decrease in light amount. The system will come back to normal AC mode after about 3 seconds.
- ▶ Batteries Meet 500 cycles of standard CH and standard DCH.
- ▶ RoHS compliant

AC Operation: When AC power is present, the LED load from the LED driver is the normal power supply, AC LED driver output current cannot exceed 150W or 4A (2A for 2ft model). The emergency driver will be charging in standby mode as indicated by the red LED light.

Emergency operation: When the AC power goes out, the emergency driver detects the AC power outage and automatically switches to the working emergency mode. The red LED light will be off. When the AC power is restored, the emergency driver switches back to AC power and starts re-charging. The red LED light will then turn back on. For 4ft: In emergency mode, press three-seconds (3S) the test switch to turn off the current emergency state. For 2ft: In Emergency mode, double-click the test button, to turn off the emergency mode.

⚠ WARNING

This product should be installed by a qualified electrician. Connecting wires when power is on is not allowed. Power can be turned on after making sure that there is no phenomenon of short circuit and the connection is ok.

| Model | Battery capacity | Max emergency output power | Battery back up current | Battery back up operation time | Battery voltage | Lumens |
|----------------------------|------------------|----------------------------|-------------------------|--------------------------------|-----------------|----------|
| ASD-LSF5-2A28AC-4EM-PRM | 2,500 mAh | 4W | 250 mA | ≥ 90 minutes | 3.7 V | 720 lm |
| ASD-LSF5-4A44AC-12EM-PRM | 2,500 mAh | 12W | 250 mA | ≥ 90 minutes | 11.1 V | 1,950 lm |
| ASD-LSF5-4A44AC-12EM-MS-SW | 2,500 mAh | 12W | 250 mA | ≥ 90 minutes | 11.1 V | 1,950 lm |
| ASD-LSF5-8A90AC-EM-PRM | 3,000 mAh | 15W | 250 mA | ≥ 90 minutes | 9.6 V | 2,400 lm |

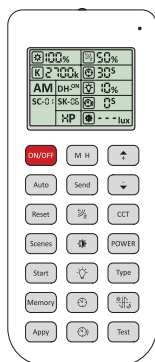
For most up-to-date spec sheets please refer to asd-lighting.com



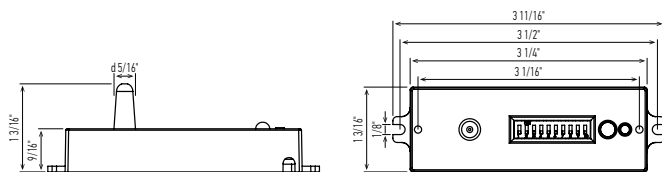
LED STRIPLIGHT AND STAIRWELL FIXTURE

BUILT-IN MOTION SENSOR INFORMATION

REMOTE CONTROL **ASD-RC100LCD** sold separately



| Button | Remarks | Button | Remarks | Button | Remarks |
|---------------|---|-------------------------|---|----------------------------|--|
| ON/OFF | ON/OFF Turn the sensor ON/OFF. | M H | Mounting height Adjust detection area/sensitivity levels according to real installation situations, higher or lower. | Up | The main functional buttons to adjust the factors to desired level. Press + - button to dim light directly auto in non-detection mode. |
| Auto | Auto Enter "sensor mode" and perform previous settings. | Send | Send Memorize and send out the previous setting of individual parameters. | Down | |
| Reset | Reset Go back to default program. Enter into "sensor mode" and perform the default program. | % | Detection range Also known as "sensitivity", 100 % means the highest sensitivity and longest distance. Use this button and the + - buttons to adjust. | CCT | CCT selectable Not applicable to this product. |
| Scenes | Scenes Shows current settings saved in remote. | Daylight sensor | Daylight sensor The preset lux level at which motion will be detected. Use this button and the + - buttons to adjust. | POWER | Power Adjust brightness in both ON/OFF mode & sensor mode. minimum 10%, max 100%, each time this button is pressed it changes by 5%. |
| Start | Start Press this to begin scene setup. | Stand-by dimming | Stand-by dimming After hold time, the light will dim from 100 % to optional standby dimming levels. Use this button and the + - buttons to adjust. | Type | Type Press this button to choose different remotes: ASD-RC-RC100, ASD-RC-RC200, ASD-06RC |
| Memory | Memory Saves the scene settings. | Hold time | Hold time The period that light will stay illuminated 100 % after no motion is detected. Use this button and the + - buttons to adjust. | Daylight harvesting | Daylight harvesting Daylight harvesting function enabled or disabled. |
| Apply | Apply Applies current scene settings to the fixture. | Stand-by period | Stand-by period The period after holdtime, during which the light keeps standby dimming level. Use this button and the + - buttons to adjust. | Test | Test button Press this button to test the sensor; it will temporarily change the hold time to 2s. This setting cannot be saved. |



SENSOR SETTING:



Please follow the additional motion sensor manual to set up your motion sensor.

| Specifications | Model: ANT-8A |
|------------------------|-----------------------------------|
| Power supply | 12-24 Vdc |
| HF system | 5.8 GHz ± 75 MHz |
| Dim control output | 0-10 V, max 25 mA sinking current |
| Detection radius/angle | max 26ft (8 m) / 360° |
| Mounting height | max 12 ft (3.7 m) |
| Remote range | 50 ft (15 m) indoor, no backlight |
| Humidity | max 95% RH |
| Temperature | - 40°F - 158°F (-40°C - 70°C) |

⚠ RF interference may affect the operation of this sensor.

DEFAULT SETTING:

| Detection area | Hold time | Daylight sensor | Stand-by period | Stand-by dim level |
|----------------|-----------|-----------------|-----------------|--------------------|
| 100 % | 5 min | Disable | + ∞ | 10 % |

Detection area, hold time, stand-by period, stand-by DIM level and daylight sensor can be set by using DIP switches on the sensor. Note that reducing the detection area will also reduce the sensitivity.

| ON | 1 | 2 | |
|-----|----|----|-------|
| I | - | - | 20 % |
| II | - | ON | 50 % |
| III | ON | - | 75 % |
| IV | ON | ON | 100 % |

Detection range:

Detection range is the term used to describe the radii of the detection zone produced on the ground after mounting the sensor light at a height of 8-20ft.

| ON | 3 | 4 | |
|-----|----|----|--------|
| I | - | - | 10 s |
| II | - | ON | 1 min |
| III | ON | - | 5 min |
| IV | ON | ON | 15 min |

Hold time: The light can be set to stay ON for any period of time between approx. 10sec and a maximum of 15min. Any movement detected before this time elapses will restart the timer. It is recommended to select the shortest time for adjusting the detection zone and for performing the walk test.

| ON | 5 | 6 | |
|-----|----|----|-----------------|
| I | - | - | - |
| II | - | ON | 10 lux (0.9 fc) |
| III | ON | - | 30 lux (2.8 fc) |
| IV | ON | ON | 50 lux (4.7 fc) |

Daylight sensor:

The chosen light response threshold can be infinitely from approx.

| ON | 7 | 8 | |
|-----|----|----|------|
| I | - | - | 0 % |
| II | - | ON | 10 % |
| III | ON | - | 30 % |
| IV | ON | ON | 50 % |

Stand-by dimming level:

This is the preset dimming level you would like to have after the hold time in the long absence of people.

| ON | 9 | 10 | |
|-----|----|----|--------|
| I | - | - | + ∞ |
| II | - | ON | 1 min |
| III | ON | - | 30 min |
| IV | ON | ON | 60 min |

Stand-by period:

Refers to the time period the lamp remains at a preset dimming level before it completely switches off in the long absence of people.

For most up-to-date spec sheets please refer to asd-lighting.com



LED STRIPLIGHT AND STAIRWELL FIXTURE

INSTALLATION GUIDE

IMPORTANT SAFETY INFORMATION:

Please read all the instructions below before installation!

- ▶ Make sure that the supply voltage corresponds to the rated product voltage.
- ▶ The product must be installed by a qualified electrician in accordance with the National Electrical Code and corresponding local codes.
- ▶ If the product is damaged, do not use it.

⚠ WARNING

Risk of personal injury – read and follow all warnings and installation instructions. Keep or give to the owner for future reference.

Risk of cuts: Wear gloves to prevent cuts or abrasions when removing from carton, handling, installing, and maintaining this product.

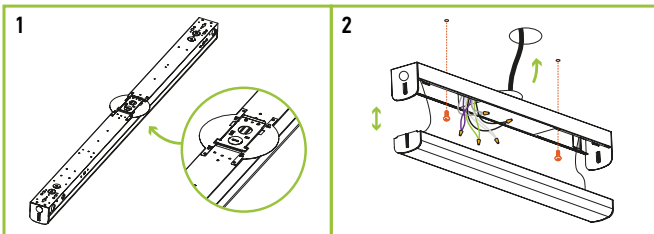
Risk of electric shock: This product must be installed in accordance with the applicable installation code by a person familiar with the construction and operation of the product and the hazards involved.

Risk of Fire: Minimum 194°F supply conductors. Consult a qualified electrician to ensure correct branch circuit conductor.

ASD® assumes no responsibility for claims arising out of improper or careless Installation or handling of this product.

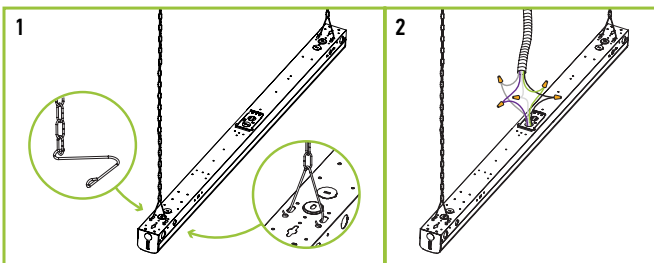
SURFACE MOUNT INSTALLATION:

1. Lock the J-box mounting plate to the middle of the fixtures backplate. Open fixture, pass the wires through the hole on the back side of the fixture.
2. Affix the fixture's base to the ceiling using anchor screws (not included) and connect the wires: Black to Black, White to White, Green to Green. Then close the fixture back.



CHAIN MOUNT INSTALLATION:

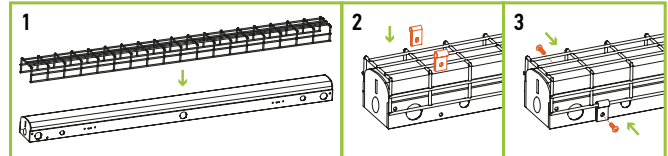
1. Insert chain on each hook and insert the hook into the installation holes. Attach the chain to the ceiling and adjust until balanced and secure.
2. Connect wires from fixture to power supply. Contain wires in metal or plastic wire hose.



WIRE GUARD INSTALLATION:

ASD-WG4-LSF5 sold separately

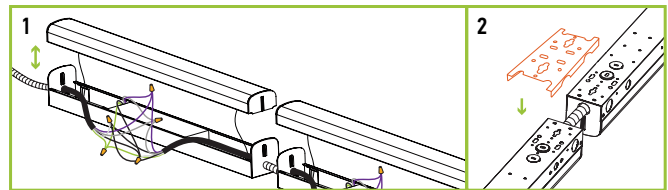
1. Install the wire guard to the fixture.
2. Insert the provided chips (4 pcs) onto the wire guard.
3. Fasten the chips by drilling screws into the pre-punched holes of fixture body.



CONNECTING MULTIPLE FIXTURES:

ASD-CB-LSF5 sold separately

1. Open the fixture and remove the knockout on the side of the fixture according to your needs. Feed the wires through the knockout hole and connect with fixture wires inside of the luminaire. If 0-10v dimming system is available, connect the purple and gray wires to the corresponding purple and gray wires in the built-in dimming system. **CAUTION:** Customer supplied AC wire must be 16AWG.
2. If need to affix one fixture to another please use connection bracket (sold separately). Repeat the process for the next fixture.



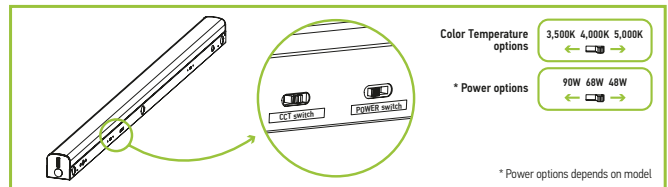
POWER AND COLOR TEMPERATURE SETTINGS:

Changing color temperature:

Change the position of the CT switch on the housing according to the required CT mode.

Changing power mode:

Change the position of the power switch on the housing according to the required power mode.



For most up-to-date spec sheets please refer to asd-lighting.com



LED STRIPLIGHT AND STAIRWELL FIXTURE

ORDERING INFORMATION

| Model | Product dimensions | Weight | Pcs. per carton | Carton size | Carton weight | UPC | GTIN 14 |
|---|-------------------------------|------------------|-----------------|----------------------|---------------|--------------|----------------|
| LSF5 | | | | | | | |
| ASD-LSF5-2A28AC-PRM | 26-3/16" x 2-5/8" x 2-11/16" | 1.8 lbs (0.8 kg) | 8 | 27.8" x 12.5" x 6.7" | 28 lbs | 810050737975 | 10810050737972 |
| ASD-LSF5-4A44AC-PRM | 46-5/8" x 2-5/8" x 2-11/16" | 2.9 lbs (1.3 kg) | 8 | 48.3" x 12.5" x 6.7" | 38 lbs | 810050730242 | 10810050730249 |
| ASD-LSF5-8A90AC-PRM | 92-13/16" x 2-5/8" x 2-11/16" | 5.5 lbs (2.5 kg) | 4 | 94.6" x 6.4" x 6.7" | 45.9 lbs | 810050730273 | 10810050730270 |
| LSF5-EM WITH BATTERY BACK-UP | | | | | | | |
| ASD-LSF5-2A28AC-4EM-PRM | 26-3/16" x 2-5/8" x 2-11/16" | 1.8 lbs (0.8 kg) | 8 | 27.8" x 12.5" x 6.7" | 49.4 lbs | 810050738514 | 10810050738511 |
| ASD-LSF5-4A44AC-12EM-PRM | 46-5/8" x 2-5/8" x 2-11/16" | 2.9 lbs (1.3 kg) | 8 | 48.3" x 12.5" x 6.7" | 47.1 lbs | 810050736053 | 10810050736050 |
| ASD-LSF5-8A90AC-EM-PRM | 92-13/16" x 2-5/8" x 2-11/16" | 5.3 lbs (2.4 kg) | 4 | 94.6" x 6.4" x 6.7" | 47.8 lbs | 810050730280 | 10810050730287 |
| LSF8 WITH BATTERY BACK-UP | | | | | | | |
| ASD-LSF5-2A28AC-MS-SW | 26-3/16" x 2-5/8" x 2-11/16" | 2.4 lbs (1.1 kg) | 8 | 27.8" x 12.5" x 6.7" | 28 lbs | 810050737982 | 10810050737989 |
| ASD-LSF5-4A44AC-MS-SW | 46-5/8" x 2-5/8" x 2-11/16" | 3.5 lbs (1.6 kg) | 8 | 48.3" x 12.5" x 6.7" | 39 lbs | 810050730266 | 10810050730263 |
| ASD-LSF5-8A90AC-MS-PRM | 92-13/16" x 2-5/8" x 2-11/16" | 6 lbs (2.7 kg) | 4 | 94.6" x 6.4" x 6.7" | 45.9 lbs | 810128112819 | 10810128112816 |
| LSF8 WITH Q-BASE AND BATTERY BACK-UP | | | | | | | |
| ASD-LSF5-4A44AC-12EM-MS-SW | 46-5/8" x 2-5/8" x 2-11/16" | 6.5 lbs (3 kg) | 8 | 48.3" x 12.5" x 6.7" | 47.5 lbs | 810050736060 | 10810050736067 |

ACCESSORIES:

| Model | Product dimensions | Pcs. per carton | Carton size | Carton weight | UPC | GTIN 14 in carton |
|--------------|-----------------------------|-----------------|-----------------------|---------------|--------------|-------------------|
| ASD-RC100LCD | 5-13/16" x 2-3/4" x 1" | 80 | 12.8" x 12.8" x 12.8" | 25.2 lbs | 810190200520 | 10810190200527 |
| ASD-CB-LSF5 | 5-1/4" x 2-3/4" x 11/16" | 100 | 14.3" x 5.7" x 8.1" | 20.9 lbs | 810050730747 | 10810050730744 |
| ASD-WG4-LSF5 | 46-13/16" x 3-1/4" x 2-3/8" | 8 | 47.8" x 10.6" x 7.3" | 14.3 lbs | 819201027149 | 10819201027146 |

For most up-to-date spec sheets please refer to asd-lighting.com

ASD LIGHTING CORP

E-mail: orders@asd-lighting.com | Web site: www.asd-lighting.com

