



LED SPORT LIGHT WITH DMX

► **DESIGN** - LED SPORT LIGHT WITH DMX has a die-cast aluminum housing with numerous vents on the heat sink for excellent heat dissipation. Advanced optics designed with unique multi-scale lenses provides uniform light distribution, glare-reduction maximizes the light output. CRI80+ rating provides rich and natural colors. It is designed to operate on 200-480V circuits.

► **CUSTOM CONTROLS** - Fixtures are controllable with wired DMX or 0-10V dimmable driver to suit your needs for Individual light control for dynamic & static scenes. DMX protocols allows information to be transferred between multiple devices, such as lighting commands, fault details and diagnostics.

► **3G** - vibration rated, withstands conditions with repeated vibration, making it conform to standards for roadway.

► **INSTALLATION** - This fixture is Wet locations rated and has two mounting options with a standard floodlight bracket or a slip fitter. It comes with 10 ft cord. Perfect commercial or industrial solution for any outdoor sports lighting, parking lot lighting, dock lighting, high mast flood lighting, stadium lighting, and many other applications.

► **ADVANTAGES** - With calculated lifespan up to 153 000 hours, these fixtures are made to last decades under normal operation! ASD provides a 7-year limited warranty along with UL and DLC Premium certifications to guarantee top quality products and safety!



PRODUCT PRESENTATION:

Model	Power	Voltage	Dimming	Lumens	CCT	Finish	Dimensions	Certification
ASD-SPFL7HV-500D50-DMX	500W	200-480V	DMX	75,057lm	5,000K	Black	17-5/8" x 16-1/8" x 10-15/16"	UL (E473804), DLC Premium

TECHNICAL PARAMETERS:

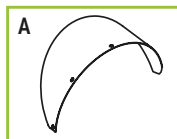
Model	Max input current	Inrush current	Work environment	Operating temperature	Power factor	Surge protection	Housing	Lens	CRI
ASD-SPFL7HV-500D50-DMX	2.8A	45A	Wet location	-40°F to 122°F (-40°C to 50°C)	> 0.9	10kV	Aluminum	PC	> 80

EPA (EFFECTIVE PROJECTED AREA):

Fixture quantity	
Single	0.85/1.28/1.36 ft ²

PACKAGE CONTENTS:

Description	Quantity
LED Sport Light with DMX	1
Visor (A)	1
Box	1



CONTROL OPTIONS:

Control Mode	Protocol/Standard	Details / Compatibility
0-10V Dimming	Analog	Leviton: ZS057-DOZ, DS710, DD710, IP710 Lutron: DVSTV, DVTV, MS-Z101, NTSTV
DMX Mode	DMX-RDM	Fully compatible with industry-standard DMX512 and RDM protocols, ensuring smooth integration with widely used DMX-based control setups.

BUG RATING:

Model	BUG rating
ASD-SPFL7HV-500D50-DMX	B5 U0 G2

ORDERING INFORMATION

Model	Product dimensions	Weight	Pcs. per carton	Carton size	Carton weight	UPC
ASD-SPFL7HV-500D50-DMX	17-5/8" x 16-1/8" x 10-15/16"	25 lbs (11.3 kg)	1	19.3" x 17.7" x 12.8"	29 lbs	810128115490

ACCESSORIES:

Model	Product dimensions	UPC	Pcs. per carton	Carton size	Carton weight	GTIN 14
ASD-SF1-SPFL7	15-1/4" x 17-11/16" x 3-1/16"	810128114899	5	21.5" x 18.1" x 12.6"	33.1 lbs	10810128114896
ASD-LSA-SPFL7	5-1/16" x 5-1/2" x 1-11/16"	810128115940	10	12.2" x 12.2" x 6.9"	12.4 lbs	10810128115947
ASD-L30-SPFL7-300/500	14-5/16" x 14-5/16" x 1/2"	810128114929	20	16.5" x 16.5" x 11.8"	24.3 lbs	10810128114926

For most up-to-date spec sheets please refer to asd-lighting.com

ASD LIGHTING CORP

E-mail: orders@asd-lighting.com | Web site: www.asd-lighting.com





LED SPORT LIGHT WITH DMX

INSTALLATION GUIDE

IMPORTANT SAFETY INFORMATION:

Please read all the instructions below before installation!

- ▶ Make sure that the supply voltage corresponds to the rated product voltage.
- ▶ The product must be installed by a qualified electrician in accordance with the National Electrical Code and corresponding local codes.
- ▶ If the product is damaged, do not use it.

⚠ WARNING

Risk of personal injury – read and follow all warnings and installation instructions. Keep or give to the owner for future reference.

Risk of cuts: Wear gloves to prevent cuts or abrasions when removing from carton, handling, installing, and maintaining this product.

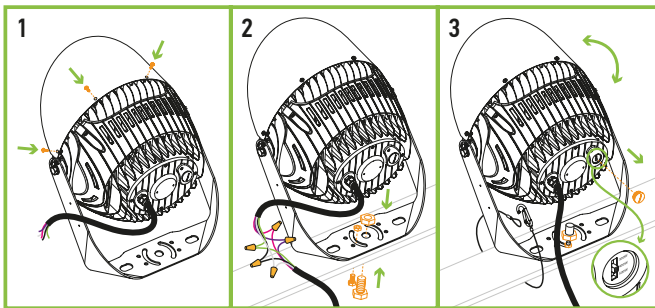
Risk of electric shock: This product must be installed in accordance with the applicable installation code by a person familiar with the construction and operation of the product and the hazards involved.

Risk of Fire: Minimum 194°F supply conductors. Consult a qualified electrician to ensure correct branch circuit conductor.

ASD® assumes no responsibility for claims arising out of improper or careless installation or handling of this product.

INSTALLATION STEPS:

1. Attach the Visor using M4x10mm screws to secure the visor onto the fixture.
2. Insert M10/M20 bolts and plain washers into the bracket. Align the rotatable bracket with the mounting structure, then secure the bracket with bolts, plain washers, and lock washers. Tighten the nuts by hand to ensure the mounting structure is secure but do not fully torque nuts until desired aiming is achieved.
3. Once the fixture is set to the desired direction, tighten the nuts fully. Set the wattage value with the switch on the back of the fixture. For installations over 10ft height use safety cable (sold separately).

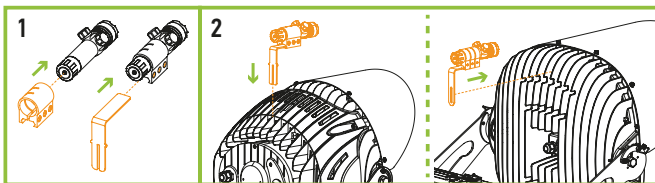


* Pointing the lenses upward is not recommended. It may cause lens pollution leading to poor fixture performance.

LASER POINTER INSTALLATION:

ASD-LSA-SPFL7 sold separately

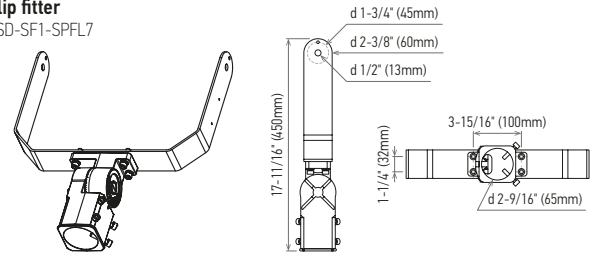
1. Attach the laser pointer to the holder. Loosen the hex screws. Slide the holder over the L bracket. Tighten the hex screws.
2. Find the mounting hole marked "Laser" on the lighting fixture. Attach.



ACCESSORIES (sold separately):

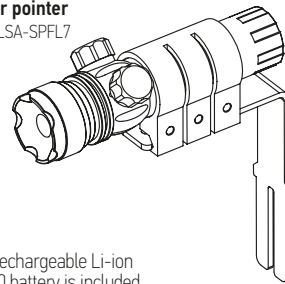
Slip fitter

ASD-SF1-SPFL7



Laser pointer

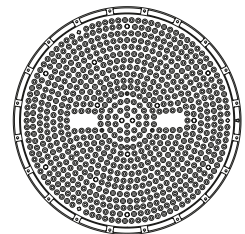
ASD-LSA-SPFL7



The rechargeable Li-ion 16340 battery is included.

Lens 30°

ASD-L30-SPFL7-300/500



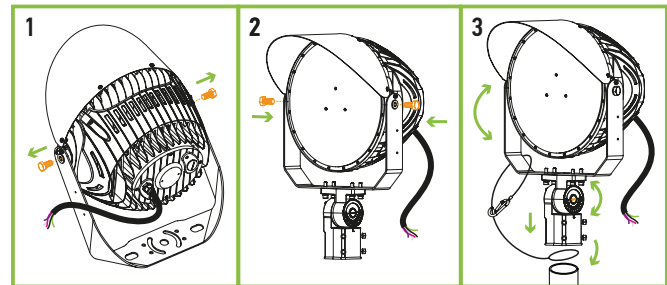
ACCESSORY COMPATIBILITY LIST:

Models	Accessories	Slip-fitter ASD-SF1-SPFL7	Laser pointer ASD-LSA-SPFL7	Lens 30° ASD-L30-SPFL7-300/500
ASD-SPFL7HV-500D50-DMX		•	•	•

SLIP-FITTER INSTALLATION:

ASD-SF1-SPFL7 sold separately

1. Use a wrench to loosen the screw on original bracket and remove it.
2. Attach the fixture on the slipfitter to the pole. Tighten the screw to secure the fixture to the base.
3. Adjust the fixture according to the desired angle and tighten the screw on the slipfitter to lock in the position. For installations over 10ft height use safety cable (sold separately).



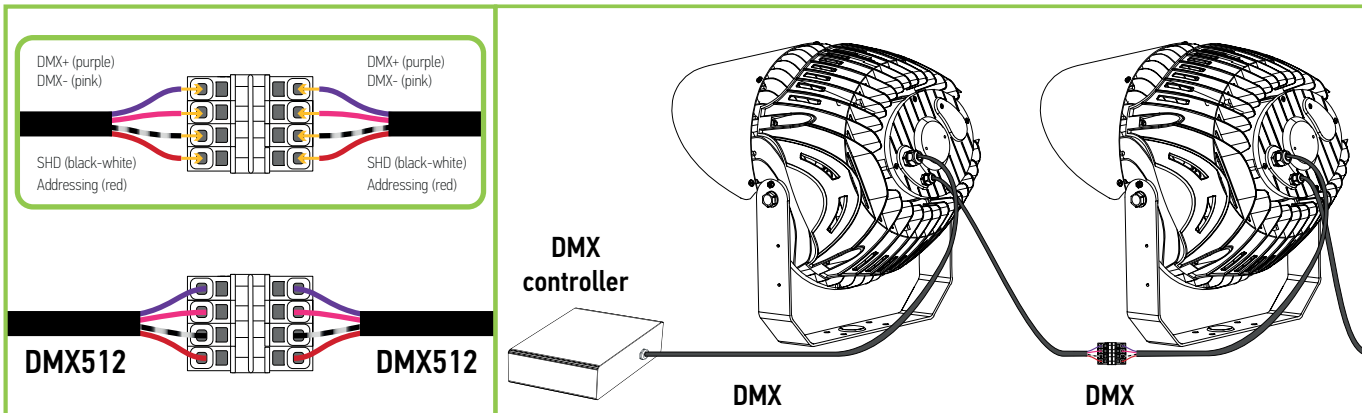
* Pointing the lenses upward is not recommended. It may cause lens pollution leading to poor fixture performance.

For most up-to-date spec sheets please refer to asd-lighting.com



LED SPORT LIGHT WITH DMX

DMX 512 CONNECT:



For most up-to-date spec sheets please refer to asd-lighting.com

